

New!

Topi-CLICK[®]
Troche-CLICK[™]

- Flexible, easy-press buttons to eject troches
- CLICK locking mechanism eliminates accidental opening
- Translucent tray allows for easy view of doses remaining
- Easy-to-fill Troche-CLICK[™] means reduced pharmacy labor
- Dispense directly to patient with disposable mold design
- No need for extra sleeve covers
- Each cavity calibrated to 1.0 gram with PEG 1450. Scored halves and quarters allow customizable dosing.



Easy-Press
Button

Troche-CLICK[™] is also available in Child Resistant Packaging

Available in 4 colors



Multiple color options make it easy for patients to distinguish between their medications.

Improves the Patient Experience and Increases Pharmacy Efficiency



HELPING THOSE WHO HELP OTHERS



Flexible, Easy-Press
Button to Eject Troches

Compliant with FDA 21.177 | FDA grade materials | BPA and Phthalate free | Blocks UV

Request FREE Samples for Patient Trials at:
877.870.8448 info.TopiCLICK@teamtech.com



Topi-CLICK | TEAM Technologies
300 Parkbrooke Place, Suite 140, Woodstock, GA 30189 USA
T. 877.870.8448 E. info.TopiCLICK@teamtech.com
www.Topi-CLICK.com



Pharmaceutical
Delivery
Devices



Topi-CLICK® Troche-CLICK™



- ✓ Flexible Easy-press Buttons™ to eject full troches.
- ✓ CLICK locking mechanism eliminates accidental opening.
- ✓ Translucent tray allows for easy view of doses remaining.
- ✓ Available in 4 colors to aid in medication differentiation.

Flexible Easy-press Buttons™
make it easy to eject full troches.



Patient Use Instructions



STEP 1:
Remove troche tray from
protective cover.



STEP 2:
Use Easy-press Buttons™ to eject
troche lozenge. Dispense troche
lozenge dosage as directed by your
physician or pharmacist.



STEP 3:
Slide protective cover over
tray to activate the CLICK
locking mechanism.

Topi-CLICK® Troche-CLICK™ is Available in 4 Colors

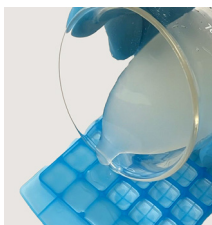


Multiple Color Options make it easy for patients to distinguish between their medications.

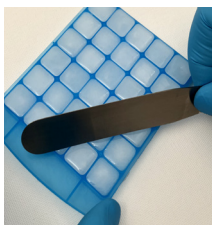


- ✓ Flexible Easy-press Buttons™ to eject full troches.
- ✓ Dispense directly to patient with disposable mold design.
- ✓ Easy-to-eject and reinsert for quality control checks.
- ✓ Heat resistant tray means less warping when filling or removing excess base with heat gun.
- ✓ Large label surface on cover.
- ✓ No need for extra sleeve covers.

Filling Instructions



STEP 1:
Place the Troche-CLICK™ tray on a clean, level surface. Fill the Troche-CLICK™ with mixture.
Filling techniques may include: pouring directly from a glass beaker, transferring mixture using a syringe or transfer pipette.



STEP 2:
Remove excess troche material by scraping over the top of the troche lozenges with a clean spatula.
The PEG base shrinks during cooling. Add additional material to the individual cavities, if required.



STEP 3:
After the troche material has set, a heat gun can be used to remelt the top of the troches to provide a polished appearance to the troches.



STEP 4:
Troches lozenges can be removed and then replaced to conduct quality checks.



STEP 5:
Slide the troche tray into the cover. Label can now be applied to the cover and lip of the tray.

TECHNICAL SPECIFICATIONS:

Topi-CLICK® Troche-CLICK™

Dispenser Volume: Up to 30 individual 1.0g (PEG 1450) troche lozenges.

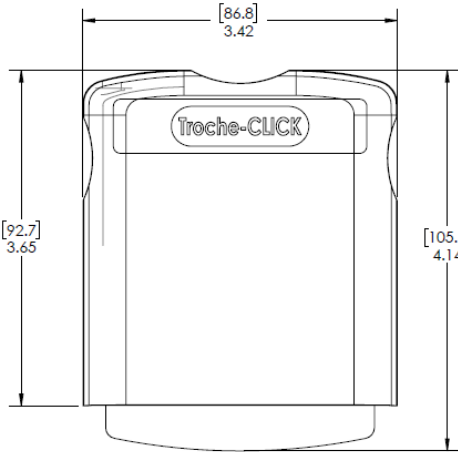
Delivery Volume: 1.0g (PEG 1450) per troche (Each troche can be divided into halves or quarters).

Doses Provided: Device can hold thirty 1.0g (PEG



SKU#:
LOT#:
MFG. DATE:

Place label here.



Topi-CLICK® Troche-CLICK™	Package Contents:
	25 - Troche Molds
	Assemblies: 25 - Trays 25 - Covers

Topi-CLICK® Troche-CLICK™ 1.0 gram per Cavity

1	Capacity	30 x 1.0 gram PEG 1450 (0.89mL) per cell	
2	Dosing	1.0 gram PEG 1450 (0.89mL) per cell	
3	Materials	Component	All FDA 21 CFR 177 Compliant
		Tray	Polypropylene
		Cover	Polypropylene
		Colorants	All Color Parts
		UV Inhibitors	Tray Only
4	Storage	General Warehouse	35 - 160 F (2 - 71C)
5	Shelf Life	5 Years	
6	Other & Usage	See Website & Contact info.TopiCLICK@teamtech.com	
7	Label Size	Cover	3.0" W x 2.0" H
8		Tray	0.5" H x 1.5" W

